

Seed Basics

Botany and Biology

Russell T. Nagata

College of Tropical Agri. and Human Resources

Komohana Research and Education Center

Hilo, Hawaii

russelln@hawaii.edu

Hawai'i Public Seed Initiative
Seed Saving and Production Basics



UNIVERSITY of HAWAII®
MĀNOA

Monocots and Dicots

- Major division in plant biology
 - Angiosperm
- Difference in plant growth pattern
- Difference in seed germination




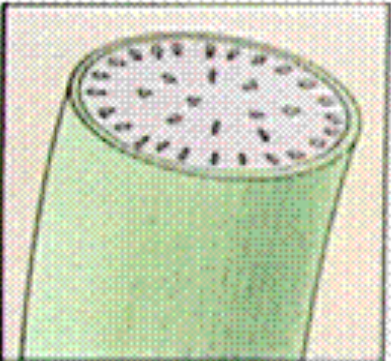


Monocots

- one cotyledon in seed
- include all grasses
- parallel veins
- bundled vascular strands scattered
- flower petals number 1, 3 and 6
- secondary growth absent

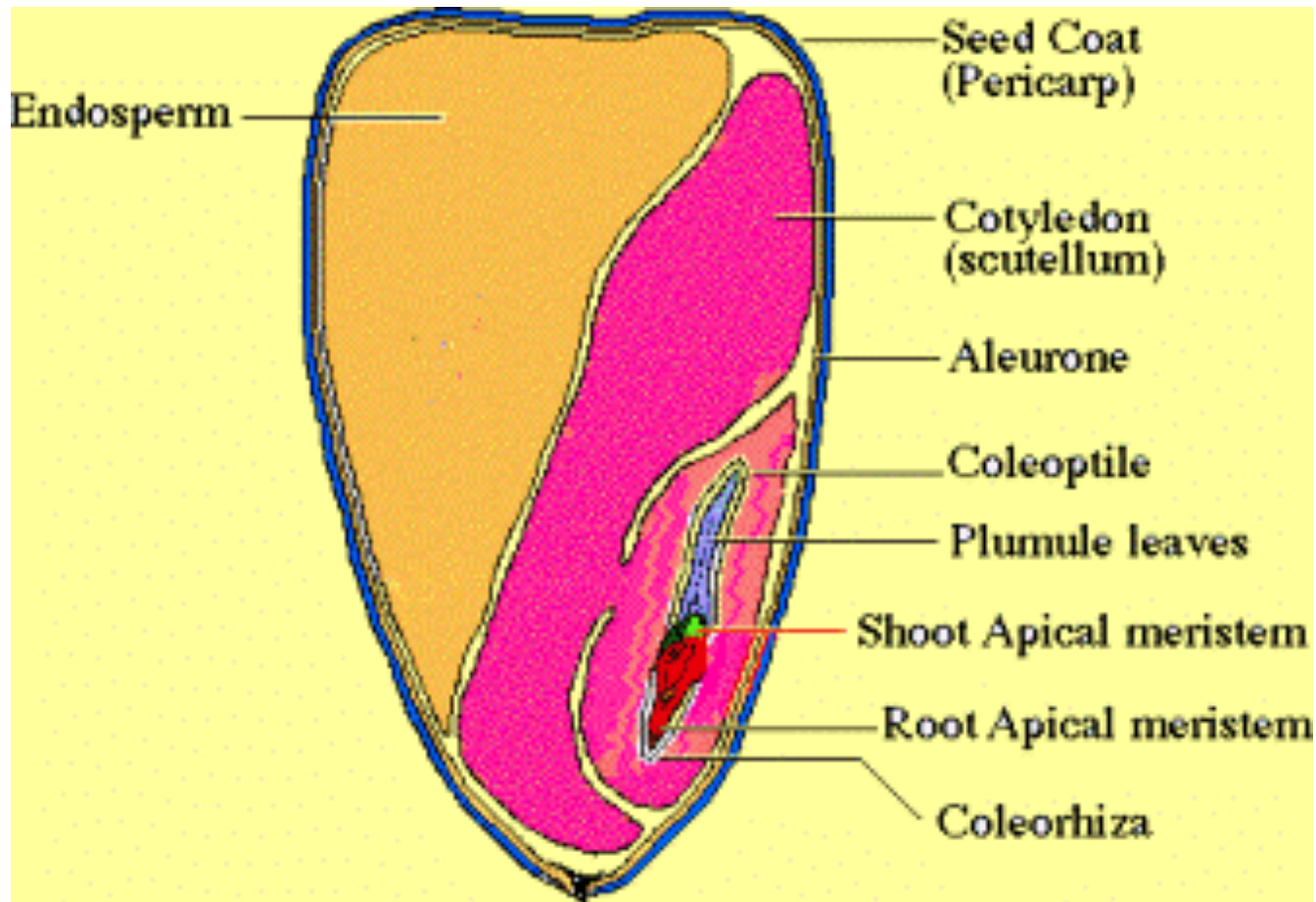


Monocots

MONOCOTS			
Cotyledons	Veins in leaves	Flower parts	Arrangement of primary vascular bundles in stem
			
One cotyledon	Usually Parallel	Usually in multiples of three	Scattered



Monocot Seed



Hawai'i Public Seed Initiative
Seed Saving and Production Basics



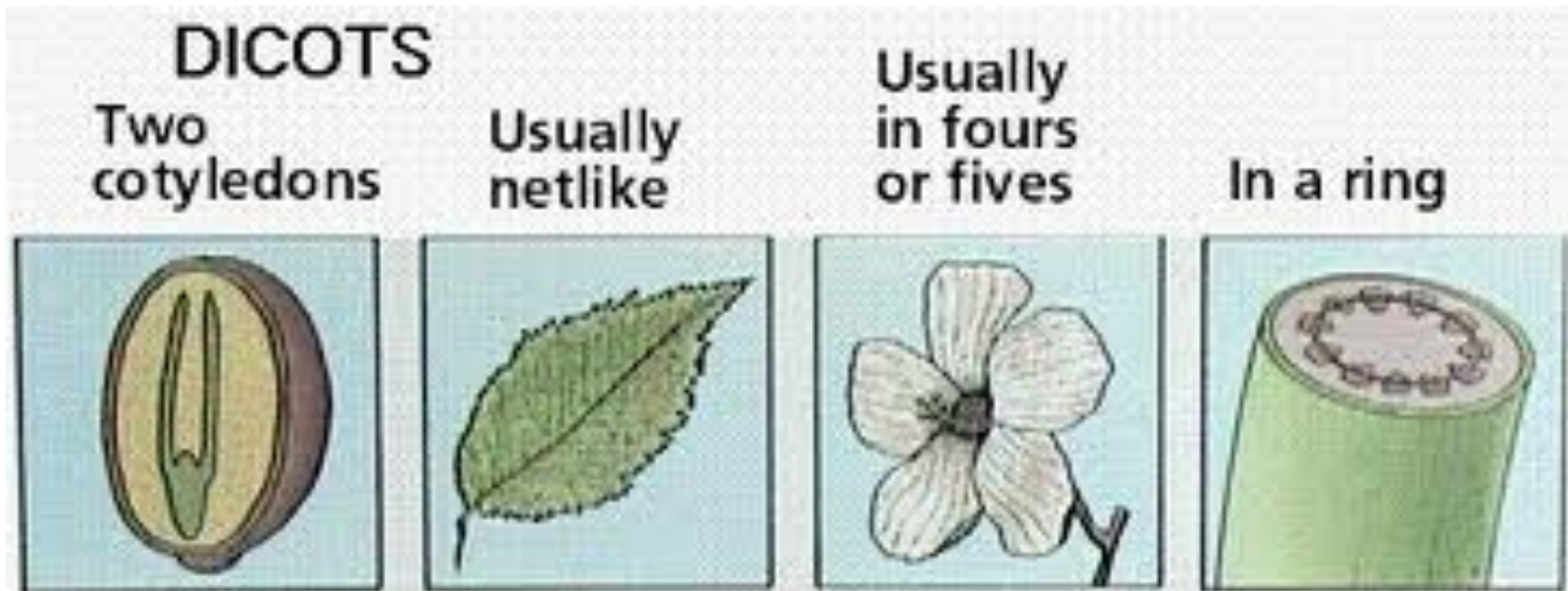
UNIVERSITY of HAWAII®
MĀNOA

Dicots

- two cotyledons in seed
- major veins netted
- flower petals number 4, 5 and many
- secondary stem growth
- vascular bundle in ring

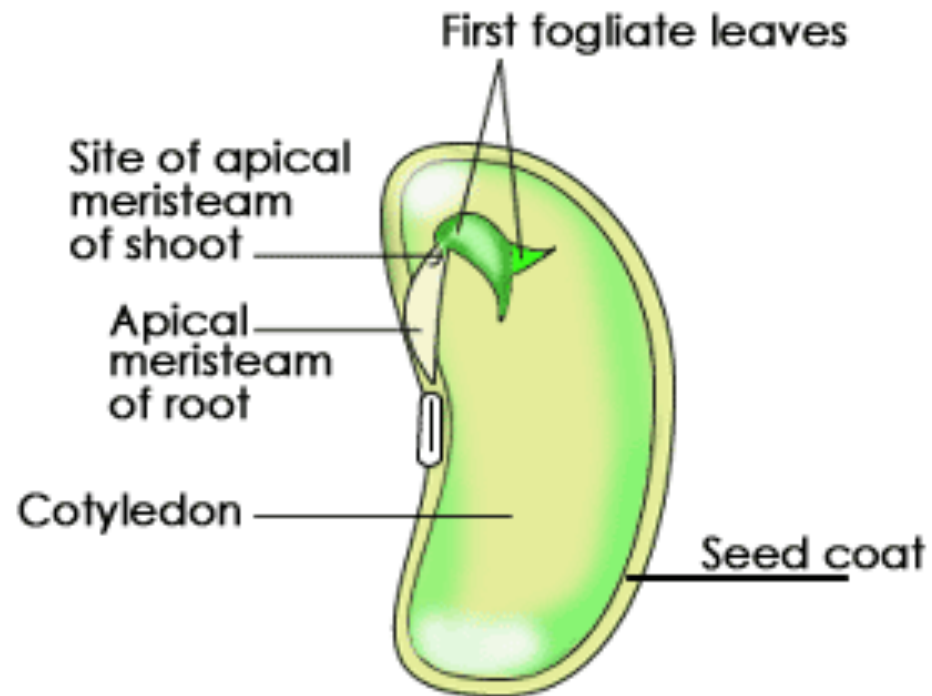


Dicot Characteristics



Dicot Seed

Dicot Seed

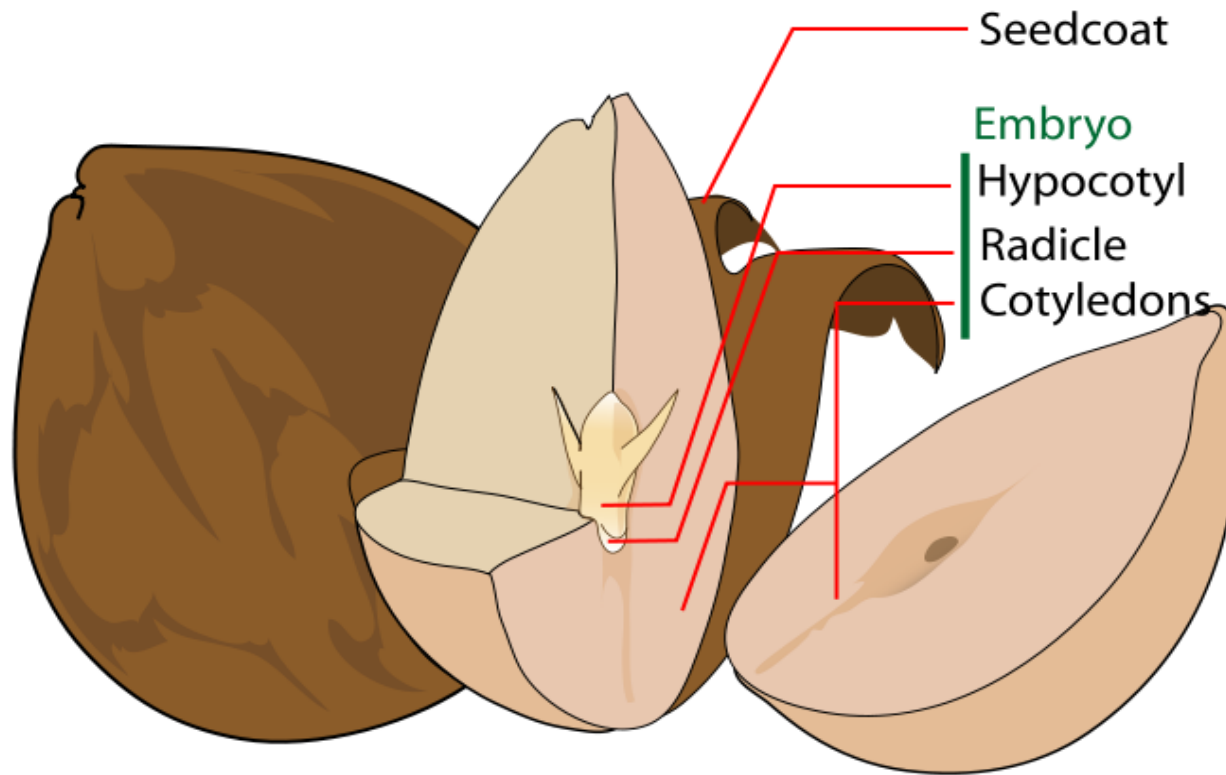


Hawai'i Public Seed Initiative
Seed Saving and Production Basics



UNIVERSITY of HAWAII®
MĀNOA

Dicot Seed



Comparison

- One cotyledon
- Petals multiple of 3
- No secondary stem growth
- Parallel major veins
- Vascular bundle scattered
- Two cotyledon
- 4 or 5 petals
- Secondary stem growth
- Net like major veins
- Vascular bundle in ring



Seed Types

- **OP or Open Pollinated Variety**
- **Hybrid Variety**
- **Heirloom Variety**



Open Pollinated Variety

- allowed to “randomly mate”
- variation in plant types are normal
- good for self saving seeds
- genetic drift constant issue
- seeds generally low cost
- includes most heirloom varieties



Heirloom Variety

- normally 2 to 3 generations or 60 years of planting history
- began in an person's garden or small farm
- has local or regional adaption
- has one or more outstanding characteristics
- possible to self save seeds



Hybrid Variety

- created by control crossing of two plants
- anthers emasculated by hand or physiologically, or by incompatibility
- plant vigor often associated with hybrids
- difficult to create hybrid seeds in home garden
- usually most expensive seeds
- cannot self save seed



Mating Preferences

- Self Pollinators
- Out Crossers



Self Pollinators

- **Self Compatible**
- **Floral Morphology**
 - **enclose reproductive structures**
 - **tubes**
 - **pollination prior to flower opening**
 - **flower positioned to favor self pollination**
- **Tomato, Snap Beans, Lettuce**



Out Crossers

- **Wind Pollinated**
 - **light, loose pollen**
 - **dependent on wind direction**



Out Crossers

- **Wind Pollinated**
- **Insect Pollinated**
 - **availability of pollinators**
 - **pollinator preference**
 - **greenhouse production conditional**



Out Crossers

- Wind Pollinated
- Insect Pollinated
- Vertebrate Pollinated
 - birds, mammals



Out Crossers

- **Wind Pollinated**
- **Insect Pollinated**
- **Vertebrate Pollinated**
- **Self Incompatibility**
 - **Chemical Recognition**
 - **Pollen and seed compatibility**
 - **Eg. Cabbage, Onions, Radish**



Out Crossers

- Wind Pollinated
- Insect Pollinated
- Vertebrate Pollinated
- Self Incompatibility
- Floral Biology



Floral Biology

- **Monoecious**
 - one plant with male and female flowers
- **Dioecious**
 - separate male and female flower plants
- **Receptivity**
 - pollen shed and stigma receptivity not synchronized



Out Crossers

- Wind Pollinated
- Insect Pollinated
- Vertebrate Pollinated
- Self Incompatibility
- Floral Structure Dependent
- Hybrid Vigor



Out Crossers

- Wind Pollinated
- Insect Pollinated
- Vertebrate Pollinated
- Self Incompatibility
- Floral Structure Dependent
- Hybrid Vigor
- Inbreeding Depression Possible
 - **reduced plant vigor**



Pollen Transfer

- **Wind**
 - **direction important in small plots**
 - **loose pollen grains**



Pollen Transfer

- **Wind**
- **Insects and Animals**
 - **Sticky Pollen Grains**
 - **Packaged Pollen Grains**
 - **Bees and Wasps**
 - **Beetles**
 - **Flies**
 - **Butterflies and Moths**



Pollen Transfer

- **Wind**
- **Insects and Animals**
- **Humans**
 - **Lack of Natural Pollinators**
 - **New Character Combinations**
 - **Variety Purity**



Reproductive Cycles

- **Annuals**
- **Biennial**
- **Perennial**



Annuals

- Seed to Seed in One Growing Season
- Herbaceous
- Bean, pea, corn, lettuce, cucurbits



Biennials

- **Require Two Growing Seasons**
 - **seed to seed**
- **Need Dormancy or Photoperiod**
- **cabbage, beets, carrots, collards, kale**



Perennials

- **Grow Many Years**
- **Many Seed Cycles**
- **Many Are Woody Plants**
- **coconut, avocado, etc.**



Strategies on Saving Seeds

- What is the best source
- Genetic diversity
- Seed purity and rouging
- Selection criteria
- Isolation distances



What to Save From?

- Heirlooms
- Self Pollinated Crops
- Annuals
- Open Pollinated Varieties
- No Hybrids Unless...



Maintaining Genetic Diversity

- **How Many Plants to Keep**
 - **Mating Biology**
 - **Genetic Drift**
 - **Available Space**
 - **More Plants or More Seeds**
 - **Seed Yield Ratio**
 - **Seed Quantity Needed**



Maintaining Genetic Diversity

- **How Many Plants to Keep**
- **Plant Selection**
 - **Reason For Selection**
 - **Eliminated Undesirables**
 - **Move in New Direction**
 - **New Possibility**



Maintaining Genetic Diversity

- How Many Plants to Keep
- Plant Selection
- Population Makeup
 - Population Uniformity
 - Narrow Genetic Base
 - Open Pollinated



Maintaining Genetic Diversity

- How Many Plants to Keep
- Plant Selection
- Population Makeup
- Pollination Biology
 - mating behavior
 - pollen transfer



Seed Purity

- **Dependent on Starting Material**
 - **What are your objectives?**



Seed Purity

- **Dependent on Starting Material**
- **Selection and Rouging Procedures**



Seed Purity

- **Dependent on Starting Material**
- **Selection and Rouging Procedures**
- **Cleanliness**



Seed Purity

- **Dependent on Starting Material**
- **Selection and Rouging Procedures**
- **Cleanliness**
- **Proper Labeling – Seed to Seed**
 - **Variety Name**
 - **Common or Scientific Name**
 - **Date**



Seed Purity

- **Dependent on Starting Material**
- **Selection and Rouging Procedures**
- **Cleanliness**
- **Proper Labeling – Seed to Seed**
- **Seed Saving Goals and Objectives**



Seed Purity

- Dependent on Starting Material
- Selection and Rouging Procedures
- Cleanliness
- Proper Labeling – Seed to Seed
- Seed Saving Goals and Objectives
- Pollen Flow Control
- **Start to Finish**



Isolation Distances

- **Crop Specific**
 - **Pollination Biology**
 - **Self Pollination**
 - **Cleistogamy**
 - **Wind Pollinated**
 - **Insect Pollinated**
 - **Animal Pollinated**



Isolation Distances

- **Crop Specific**
- **Location Specific**
 - **In Geographic Space**
 - **In Time**
 - **Exclusion of Pollinators**



