

Come learn about the planned **Hawai'i Island Air Quality Network**

Are you looking for ways to **teach NGSS practices in your math and science classes**, or just want to **learn more about Hawai'i's air quality**? Researchers and scientists from the **Massachusetts Institute of Technology (MIT)** are partnering with **The Kohala Center** to create an air-sensor network on Hawai'i Island. The network will be comprised of 30 to 40 sensor nodes to measure vog and weather. Data will be publicly accessible.

- » **Community members** are welcome to provide input on sensor-node sites and desired features.
- » **Teachers** are invited to participate and receive professional training, resource kits, and mentorship for their schools.

Join us for a short presentation, conversation, and hands-on activities to learn more:

KEALAKEHE

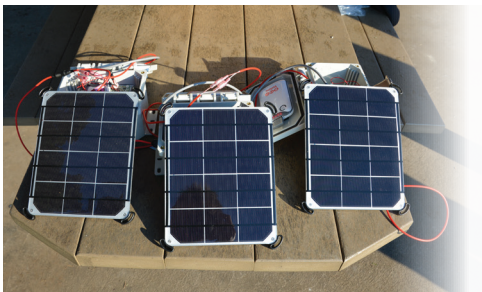
Monday, January 22
Kealakehe High School
Library
4–5:30 p.m.

HILO

Tuesday, January 23
Hilo High School
Room C-205
4–5:30 p.m.

WAIMEA

Wednesday, January 24
Waimea Middle School
Z Bldg, Science Demo Lab
4–5:30 p.m.



Attendance is free but advance registration is requested.

Register online at

koha.la/aqworkshops

or contact Ilene Grossman at

igrossman@kohalacenter.org or 808-887-6411.



The Kohala Center is an equal opportunity provider, employer, and lender.