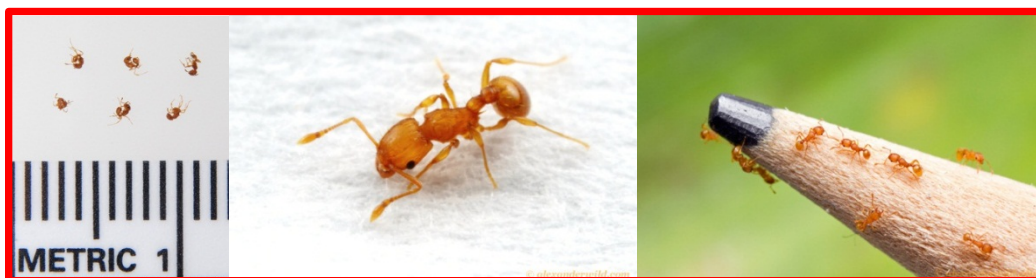


“Electric Ant” or “Little Fire Ant” Workshop



Tuesday, November 27, 2012

Kona Imin Center

(76-5893 Old Government Rd., Holualoa, HI, 96725)

5:30 PM – 7:30 PM

***Bring your pesticide license to receive 1.5 RUP credits**

The “Electric Ant” or “Little Fire Ant (LFA)” or *Wasmannia auropunctata* is an ant that shouldn’t be taken lightly. This ant is found in much of East Hawaii and in several West Hawaii locations. The first LFA infested Kona coffee farm was also recently identified.

LFA may be easily and unintentionally transported to your farm, residence, or other locations on fresh fruits, mulch, plants, potted plants, cut flowers and foliage, lumber, etc. In addition, the Hawaii Department of Agriculture’s interisland quarantine protocol requires ALL propagative plant materials to be inspected by an HDOA Plant Quarantine Inspector prior to interisland transport to reduce the risk of spreading LFA and other pests to neighbor islands.

If this ant invades your property, home, and/or farm, these are some of your potential risks:

- financial losses
- very painful stings
- harmful to pet health and eyes
- loss of business
- disclosure issues
- loss of labor
- quarantine issues
- costly treatments

Learn about the Little Fire Ant from ant specialist, Cas Vanderwoude, as he provides an educational LFA presentation. Derek Shigematsu of the HDOA Pesticide Education and Certification Section will also discuss pesticide labeling, use, and handling. Furthermore, coffee farmer, Kim Johnson will talk about her personal experiences with finding LFA on her property and in her coffee field and how she has been affected by the ants. A question and answer session will follow.

Please preregister for this event by contacting Gina Bagarino at 808-322-4892 or emailing Andrea Kawabata at andreak@hawaii.edu.



DIRECTIONS: The Kona Imin Center is in Holualoa town. If coming from North Holualoa, take the Old Mamalahoa Highway or Kona Belt Road. Pass the 5 mile marker heading south. There will be a green “Kona Imin Center” sign on the right as you pass Kahako Place on the right. Turn left onto Old Government Road and head straight into the center. If coming from South Kona, head north on the Old Mamalahoa Highway or Kona Belt Road. Take a right onto Old Government Road after the 4 mile marker.

In accordance with Federal law and U.S. Department of Agriculture policy, this institution is prohibited from discriminating on the basis of race, color, national origin, sex, age, or disability. To file a complaint of discrimination, contact USDA, Office of the Assistant Secretary of Civil Rights, Whitten Building, 1400 Independence Ave.,

SW., Washington, D.C., 02050-9410 or call [1-866-632-9992](tel:1-866-632-9992) Toll Free; or [1-800-877-8339](tel:1-800-877-8339) Federal Relay Service; or [1-800-845-6136](tel:1-800-845-6136) (In Spanish); or [1-800-795-3272](tel:1-800-795-3272) between the hours of 8:30 am and 5:00 pm Eastern Standard Time; or (TDD) 720-2600. USDA is an equal opportunity provider and employer.

For information or to request an auxiliary aid or service (e.g., sign language interpreter, designated parking, or materials in alternate format), contact Andrea at 322-4894 seven days before the training, activity, or event.

Team Based Educational Programs for Hawaii’s Farmers



University of Hawaii at Manoa
College of Tropical Agriculture and Human Resources



Andrea Kawabata
University of Hawaii at Manoa
College of Tropical Agriculture and Human Resources
Kona Extension Office
79-7381 Mamalahoa Highway
Kealahou, HI 96750

Follow us online at
www.ctahr.hawaii.edu/life

